



GREYWOLF™

Attachments



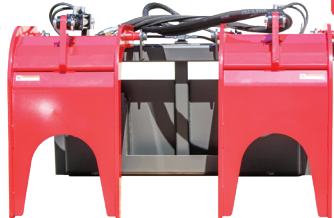
HEAVY-DUTY | FASTER & EASIER DIY JOBS
easily mounts to standard universal quick attachment

GREYWOLF™ DOUBLE QUICK ATTACH GRAPPLE



SKID STEER ATTACHMENT

- Primarily used to attach to most buckets allowing for easy pick up and maneuvering of brush, debris and more
- For skid steers using the standard universal quick attachment
- Gray/red powder coat finish
- Heavy-duty construction with 5/16" thick steel plate
- 49" x 34" x 36" (W x H x L)
- Weighs 620 lbs
- Grapples: 5/8" thick tines with 3/8" web gusseting
- Cylinder: 2" bore x 6" stroke
- Maximum pressure of 3,000 PSI
- Connected to and powered by skid steer hydraulic system
- Hoses and flat faced couplers included
- Designed to attach to your skid steer's quick attach plate and then use its own quick attach mount to couple to most buckets
- **Will not fit all attachments**, attachment connected to grapple must have no more than 4.5" from the top surface of the attachment to the upper inner corner of the quick attach lip



PART #	DESCRIPTION	RETAIL
1066	Double Quick Attach Grapple	\$2,749
1071	Bale Grapple Add-On	\$1,099

MANUFACTURER'S 1 YEAR WARRANTY

FOR MORE INFORMATION VISIT:

GREYWOLFATTACHMENTS.COM



308 NW 2nd St. | Renville, MN 56284
(888) 872-7116 | greywolf@tractorseats.com

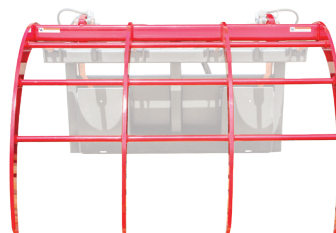
Copyright © 2022. This flyer contains 2022 US Prices. Prices and product specs are subject to change without notice.



GREYWOLF™ BALE GRAPPLE

SKID STEER ATTACHMENT ADD-ON

- Primarily used to attach to most buckets allowing for easy pick up and maneuvering of bales of hay
- For skid steers using the standard universal quick attachment
- Red powder coat finish
- Heavy-duty construction with 5/16" thick steel plate
- 59" x 40" x 54" (W x H x L)
- Weighs 770 lbs
- Grapples: 5/8" thick tines with 3/8" web gusseting
- Cylinder: 2" bore x 6" stroke
- Maximum pressure of 3,000 PSI
- Connected to and powered by skid steer hydraulic system
- Designed to attach to the GreyWolf™ Double Quick Attach Plate (PN: 1066) and then use its own quick attach mount to couple to most buckets
- Designed to grab and pick up bales up to 5.5 ft. in diameter
- Maximum bale diameter may vary depending on the bucket or attachment connected to the double quick attach bale grapple



PART #	DESCRIPTION	RETAIL
1071	Bale Grapple Add-On	\$1,099

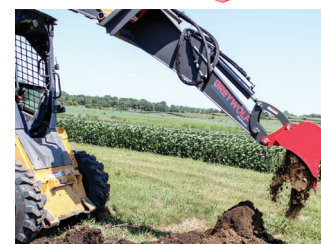
GREYWOLF™ BACKHOE

SKID STEER ATTACHMENT

- Primarily used for excavating, land clearing, landscaping, demolition, construction and grounds maintenance
- For skid steers using the standard universal quick attachment
- Gray/red powder coat finish
- Heavy-duty construction with 1/4" box framed boom and 5/16" thick steel plate
- 49" x 28" x 70" (W x H x L)
- Weighs 630 lbs
- 12" bucket width with 2 replaceable bucket teeth
- 6' 8" maximum digging depth
- Cylinder: 3" bore x 16" stroke
- 8' and 9' sleeve protected hose
- Maximum pressure of 3,500 PSI
- Connected to and powered by skid steer hydraulic system
- Hoses and flat faced couplers included
- Designed to excavate earth using hydraulically powered bucket
- Optional add on bucket available with 20" width and 4 replaceable bucket teeth



PN: 1070



PART #	DESCRIPTION	RETAIL
1065	Backhoe	\$3,299
1070	20" Bucket Add-On	\$599

MANUFACTURER'S 1 YEAR WARRANTY

FOR MORE INFORMATION VISIT:

GREYWOLFATTACHMENTS.COM



308 NW 2nd St. | Renville, MN 56284
(888) 872-7116 | greywolf@tractorseats.com

Copyright © 2022. This flyer contains 2022 US Prices. Prices and product specs are subject to change without notice.



GREYWOLF™ BALE SPEAR

SKID STEER ATTACHMENT

- Primarily used for moving hay bales
- For skid steers using the standard universal quick attachment
- Gray/red powder coat finish
- Heavy-duty construction with 5/16" thick steel plate and 3 prongs
- 49" x 22" x 43" (W x H x L)
- Weighs 190 lbs
- 39" long x 1.75" diameter Conus 2 BPT spear
- Two 17" long x 1.25" diameter stabilizers
- 3,000 lb max lift capacity
- Designed to move and stack bales of hay more efficiently

PART #	DESCRIPTION	RETAIL
1072	Bale Spear	\$699



GREYWOLF™ LAND PLANE

SKID STEER ATTACHMENT

- Primarily used for leveling dirt and gravel, and grading landscape
- For skid steers using the standard universal quick attachment
- Gray/red powder coat finish
- Heavy-duty construction with 5/16" thick steel plate
- 75" x 19" x 50" (W x H x L)
- Weighs 590 lbs
- 5/8" reversible cutting edges on the front and back
- Multi-directional tool works in forward or reverse
- Cutting edges built for back dragging, grading or sod peeling
- Designed to smooth out rough terrain by skimming off the high areas and filling in the low areas

PART #	DESCRIPTION	RETAIL
1073	Land Plane	\$2,099



MANUFACTURER'S 1 YEAR WARRANTY

FOR MORE INFORMATION VISIT:

GREYWOLFATTACHMENTS.COM

308 NW 2nd St. | Renville, MN 56284
(888) 872-7116 | greywolf@tractorseats.com



Copyright © 2022. This flyer contains 2022 US Prices. Prices and product specs are subject to change without notice.



GREYWOLF™ 24 TON LOG SPLITTER

SKID STEER ATTACHMENT

- Primarily used for splitting logs lengthwise with the grain
- For skid steers using the standard universal quick attachment
- Gray/red powder coat finish
- Heavy-duty construction with 5/16" thick steel plate
- 49" x 24" x 83" (W x H x L)
- Weighs 500 lbs
- 6" x 25 lb I-beam
- 12" splitting wedge to push wood away from operator
- Splits logs up to 25" long and 24" in diameter
- Cylinder: 4" bore (for faster cycle time) x 24" stroke
- 24 tons of splitting force
- Maximum pressure of 3,500 PSI
- Connected to and powered by skid steer hydraulic system
- Hoses and flat faced couplers included
- Designed to spit wood logs using a hydraulically powered moving push block
- Inverted to allow for splitting of wood from inside the cab
- This splitter is designed to split logs lengthwise with the grain only



PART #	DESCRIPTION	RETAIL
1064	24 Ton Log Splitter	\$2,299

GREYWOLF™ TREE PULLER

SKID STEER ATTACHMENT

- Primarily used for pulling up trees and wooden posts
- For skid steers using the standard universal quick attachment
- Gray/red powder coat finish
- Heavy-duty construction with 3/8" tubing and 5/16" thick steel plate
- 49" x 20" x 37" (W x H x L)
- Weighs 420 lbs
- 3" x 3" square tubing
- 9" maximum tree or post diameter
- Cylinder: 3" bore x 8" stroke
- Maximum pressure of 3,500 PSI
- Connected to and powered by skid steer hydraulic system
- Hoses and flat faced couplers included
- Designed to remove trees and wooden posts using hydraulically powered jaws



PART #	DESCRIPTION	RETAIL
1067	Tree Puller	\$1,999

MANUFACTURER'S 1 YEAR WARRANTY

FOR MORE INFORMATION VISIT:

GREYWOLFATTACHMENTS.COM



308 NW 2nd St. | Renville, MN 56284
(888) 872-7116 | greywolf@tractorseats.com

Copyright © 2022. This flyer contains 2022 US Prices. Prices and product specs are subject to change without notice.



GREYWOLF™ STUMP BUCKET

SKID STEER ATTACHMENT

- Primarily used for prying up tree stumps, old fence posts, removing sidewalks and asphalt, and digging up ditches and swales
- For skid steers using the standard universal quick attachment
- Gray powder coat finish
- Heavy-duty construction with 5/16" thick steel plate
- 49" x 19" x 42" (W x H x L)
- Weighs 202 lbs
- Reach far under stumps to tear out stump roots and rocks using serrated edges

PART #	DESCRIPTION	RETAIL
1062	Stump Bucket	\$749

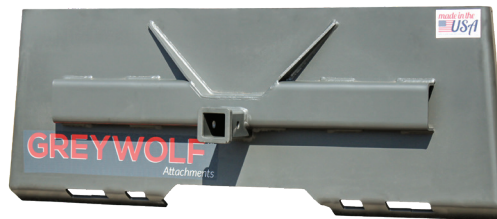


GREYWOLF™ 2" RECEIVER HITCH PLATE

SKID STEER ATTACHMENT

- Primarily used for moving trailers
- For skid steers using the standard universal quick attachment
- Gray powder coat finish
- Heavy-duty construction with 5/16" thick steel plate
- 49" x 19" x 9" (W x H x L)
- Weighs 125 lbs
- Accepts 2" trailer receiver hitch (not included)
- 3,500 lb max lift capacity (depending on hitch used)
- Receivers constructed of 1/4" thick steel
- CNC laser cut and formed for accurate precision

PART #	DESCRIPTION	RETAIL
1061	2" Receiver Hitch Plate	\$466
3453	Bolt On Safety Step Add-On	\$62



PN: 3453



MANUFACTURER'S 1 YEAR WARRANTY

FOR MORE INFORMATION VISIT:

GREYWOLFATTACHMENTS.COM

308 NW 2nd St. | Renville, MN 56284
(888) 872-7116 | greywolf@tractorseats.com



Copyright © 2022. This flyer contains 2022 US Prices. Prices and product specs are subject to change without notice.



GREYWOLF™ ROCK DEVIL®

SKID STEER ATTACHMENT

- Primarily used for removing rocks with minimal ground disturbance and crop destruction
- For skid steers using the standard universal quick attachment
- Gray/red powder coat finish
- Heavy-duty construction with 5/16" thick steel plate
- 49" x 41" x 54" (W x H x L)
- Weighs 500 lbs
- 1" thick steel digging teeth and 1" thick steel hook
- 1/2" steel gussets and reinforcing plates
- Cylinder: 3" bore x 8" stroke
- Allows rocks to be loaded into trailers or onto rock piles
- Connected to and powered by skid steer hydraulic system
- Hoses and flat faced couplers included
- Better visibility and easier maneuverability

PART #	DESCRIPTION	RETAIL
1051	Rock Devil®	\$1,899



MORE SKID STEER ATTACHMENTS FROM K&M MANUFACTURING:

HEAVY-DUTY QUICK-ATTACH PLATES

SKID STEER ATTACHMENT

- Weld to existing attachment
- For skid steers using the standard universal quick attachment
- Heavy-duty construction with 5/16" thick steel plate
- 48" x 21.375" (W x H) unfinished plate

PART #	DESCRIPTION	RETAIL
1050	Quick-Attach Plate - Cutout	\$299
1052	Quick-Attach Plate - Solid	\$299

* Volume discount with purchase of 5 or more. FREE display with purchase of 5 skid steer quick-attach plates.



PN: 1050



PN: 1052

PN: 1053



MINI SKID STEER LOADER PLATE

SKID STEER ATTACHMENT

- Weld to existing attachment
- For mini skid steers using the standard universal quick attachment
- Heavy-duty construction with 1/4" thick steel plate
- 24" x 10.25" (W x H) unfinished plate
- Use to make your own attachment or to make your old attachments fit your new mini skid steer
- Compatible with Boxer®, Ditch Witch®, Kanga®, Ram Rod®, Thomas®, Toro Dingo®, Vermeer® and many other mini skid steer loader brands

PART #	DESCRIPTION	RETAIL
1063	Mini Skid Steer Loader Plate	\$127



MANUFACTURER'S 1 YEAR WARRANTY

FOR MORE INFORMATION VISIT:

GREYWOLFATTACHMENTS.COM



308 NW 2nd St. | Renville, MN 56284
(888) 872-7116 | greywolf@tractorseats.com

Copyright © 2022. This flyer contains 2022 US Prices. Prices and product specs are subject to change without notice.

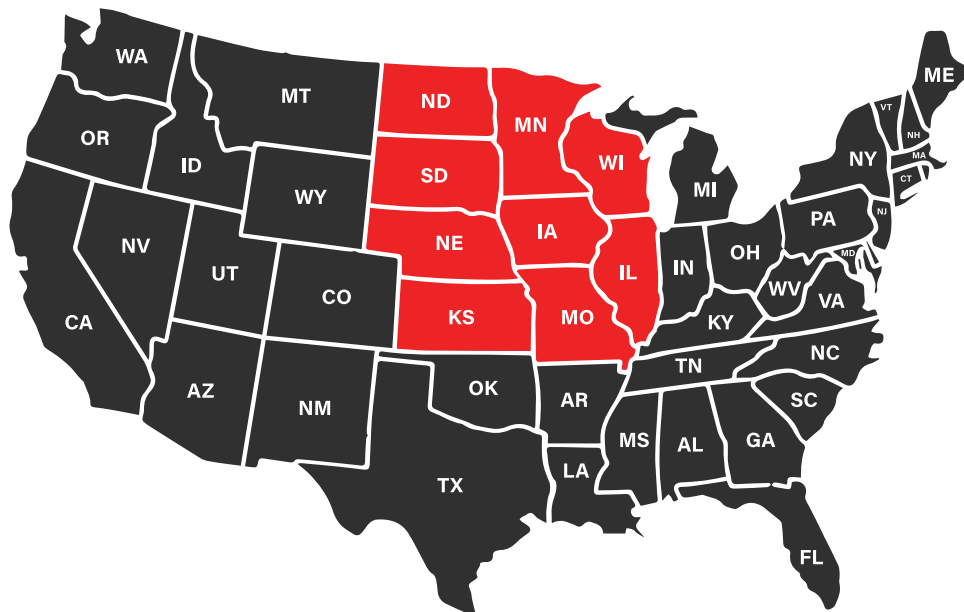


SHIPPING COSTS MAP

Continental U.S. Shipping Costs

1. Find your state to figure out if you qualify for Freight Cost 1 or Freight Cost 2
2. Use the chart below to find your cost for each specific Part Number
2. Pricing shown below is listed as cost per unit

*Please Call Sales Office for PN: 1061 Pallet Pricing



PART NUMBER	DESCRIPTION	FREIGHT COST 1	FREIGHT COST 2
1051	Rock Devil®	\$100	\$200
1061*	Receiver Hitch	\$75	\$150
1062	Stump Bucket	\$75	\$125
1064	Log Splitter	\$150	\$250
1065	Backhoe	\$150	\$250
1066	Double Attach Grapple	\$100	\$175
1067	Tree Puller	\$100	\$175
1071	Bale Grapple Add-On	\$125	\$250
1072	Bale Spear	\$100	\$175
1073	Land Plane	\$125	\$225



MADE IN THE USA

GreyWolf™ Attachments are proudly manufactured at K&M Manufacturing Co. in Renville, MN.



SHIPS BY TRUCK

GreyWolf™ Attachments are shipped by Truck only. Freight costs will be higher. View Shipping Costs Map.



QUALITY GUARANTEED

GreyWolf™ Attachments are built using top grade USA steel to bring you durability & the highest quality product.



CUSTOMER SERVICE

Our promise to you is to deliver reliable & quality product. Every time you order. Questions? Call (888) 872-7116.

MANUFACTURER'S 1 YEAR WARRANTY

FOR MORE INFORMATION VISIT:

GREYWOLFATTACHMENTS.COM



308 NW 2nd St. | Renville, MN 56284
(888) 872-7116 | greywolf@tractorseats.com

