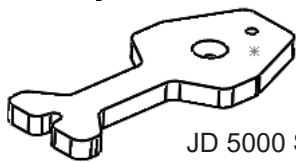


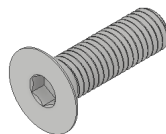
**Installation instructions to place a
K&M 117 Uni Pro into a John Deere
5000 Series open station tractor**

K&M 117 Uni Pro
PN: 7736



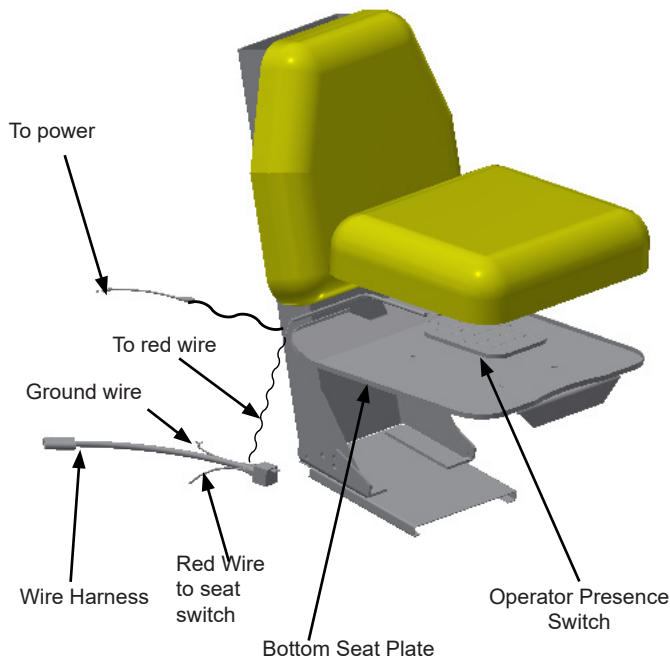
JD 5000 Series PED
PN: 10809

1. Remove the original seat and suspension. Keep the rear 12mm bolt that held down the seat.
2. See the picture to the left for orientation of the JD 5000 Series PED PN: 10809.
3. Align the the PED to the tractor using the 12mm x 40 mm flat head socket cap screw in the tapered hole and a 12mm x 35mm bolt in the front hole.
4. Tighten the flat head bolt in the back and remove the front bolt.
5. If the tractor requires an operator present switch refer to the next page for installation instructions.
6. Place the seat in the tractor and mount to the PED with a 12mm x 35mm bolt in the front and in the rear hole sliding the seat back and forth for access to the holes.



12mm X40mm HFHSCS
PN:87698

Instructions for Installing Operator Presence Switch on K&M 117 Uni Pro Seat for John Deere 5000 Series Tractor



1. Remove bottom cushion by removing four phillips screws holding the cushion to the bottom seat plate.
2. Attach operator presence switch to the top side of the bottom seat plate. Center the switch in between the 4 bolts fastening the seat plate, use the adhesive strip on the operator presence switch. Make sure that wires coming off the switch are to the back of the seat.
3. Run the wires through the existing notch in the back of the bottom seat plate.
4. Reattach the bottom seat cushion to the bottom seat plate.
5. Remove the relay from the socket and attach the relay socket on the wire harness to the bottom of the seat by using the 10-16x3/4" phillips head screw. Use an existing hole near the back right hand side of the seat.
6. Crimp the male spade connector onto the red wire from the relay harness. Trim one wire from the seat switch so it can connect to the red wire. Crimp the female spade connector onto the wire that was trimmed and connect it to the red wire.
7. Attach the eyelet on the black wire (ground) to the base of the seat with any of the existing bolts on the suspension.
8. Connect the oose wire from the seat switch to the tractors power supply.
9. Plug the connector on the harness to the appropriate plug for the operator presence switch.



Female Spade Connector Male Spade Connector