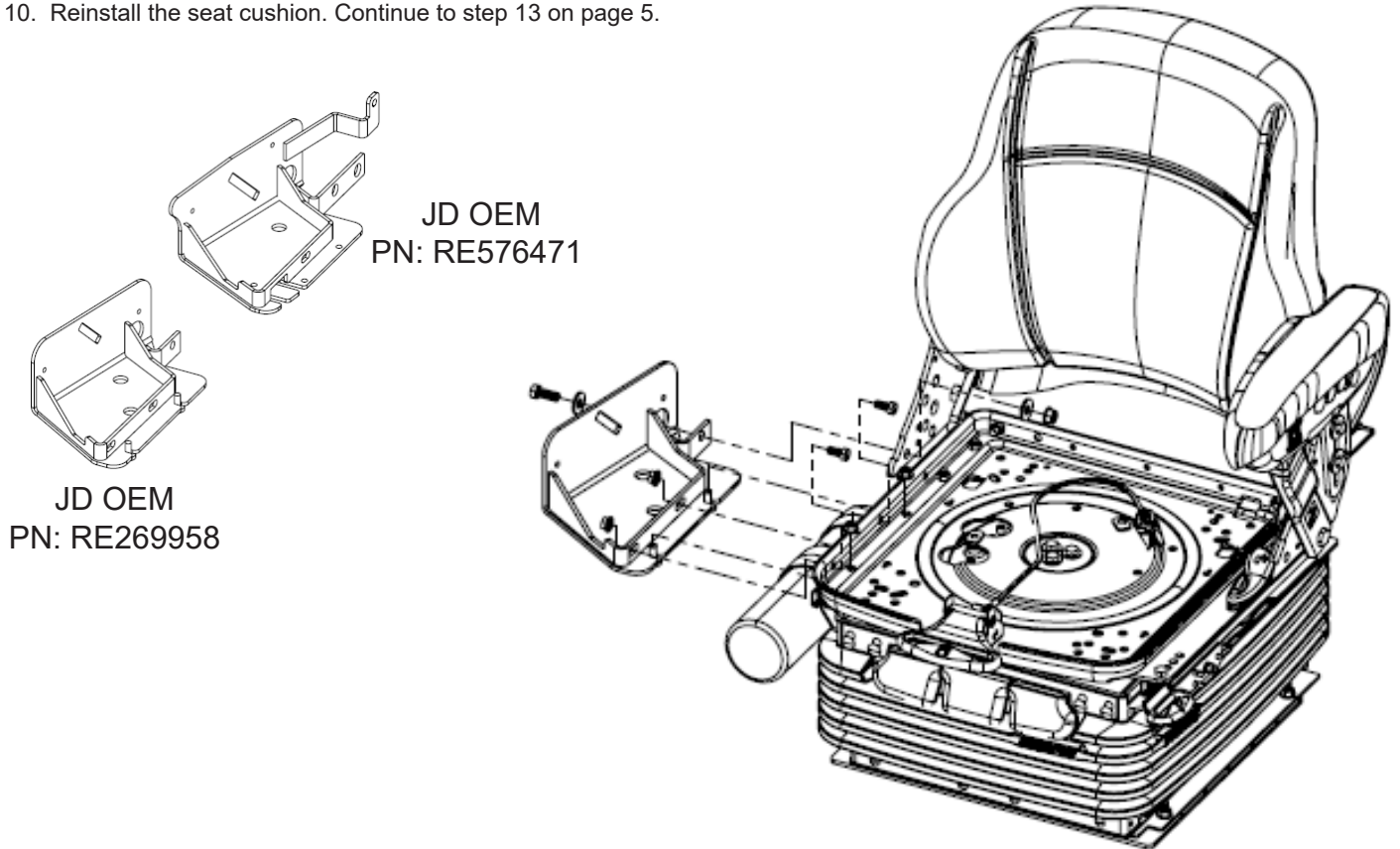


Installation Guide

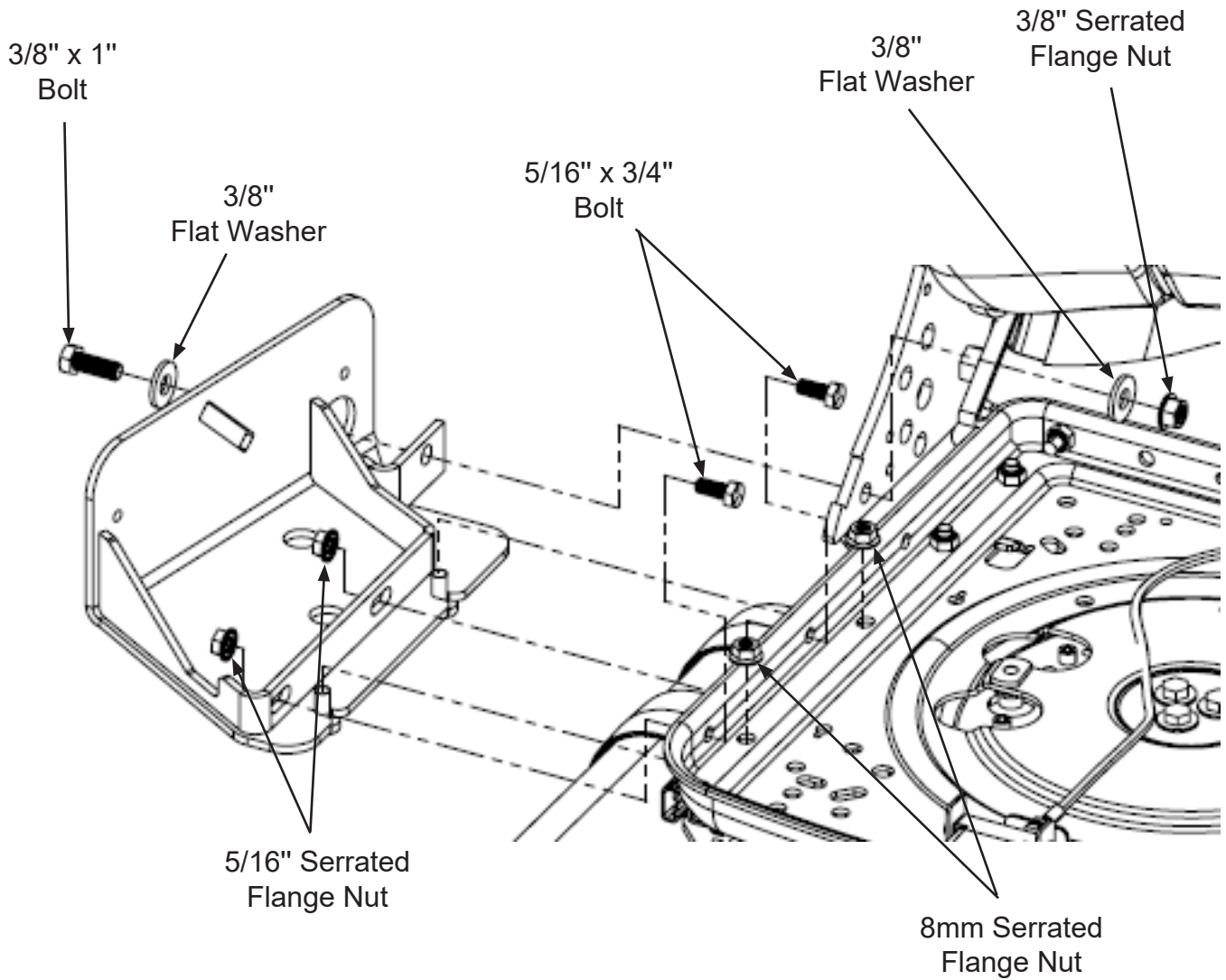
JD 7R/8R-8RT/9R-9RX KM 1300 Air Seat Kit (PN: 6994)

1. Remove the Command Arm from the OEM seat and suspension. Keep the mounting hardware for later use.
2. Remove the OEM seat from the cab. Keep the mounting hardware for later use.
3. If the original seat was an Active Seat, plug the hydraulic lines using the plugs provided.
4. Remove the OEM Command Arm Bracket from the OEM seat.
5. Remove the seat cushion from the new seat by taking out the two Phillips head screws on the front bottom of the seat pan and lifting the seat cushion off.
6. Remove the right hand armrest from the new seat.
7. The seat belt and latch need to be switched around so the latch is on the right and the belt is on the left. Do not reinstall until the Command Arm brackets are installed.
8. Install the OEM Command Arm Bracket to the new seat. Reference the images below. If you have John Deere part RE269958 continue to step 9. If you have John Deere part RE576471 go to step 11 on page 3.
9. Install John Deere part RE269958 using two 5/16" x 3/4" bolts and serrated flange nuts, two 8mm flange nuts, and one 3/8" x 1" bolt with two flat washers and a serrated flange nut. See page 2 for a more detailed view of the installation.
10. Reinstall the seat cushion. Continue to step 13 on page 5.



Installation Guide

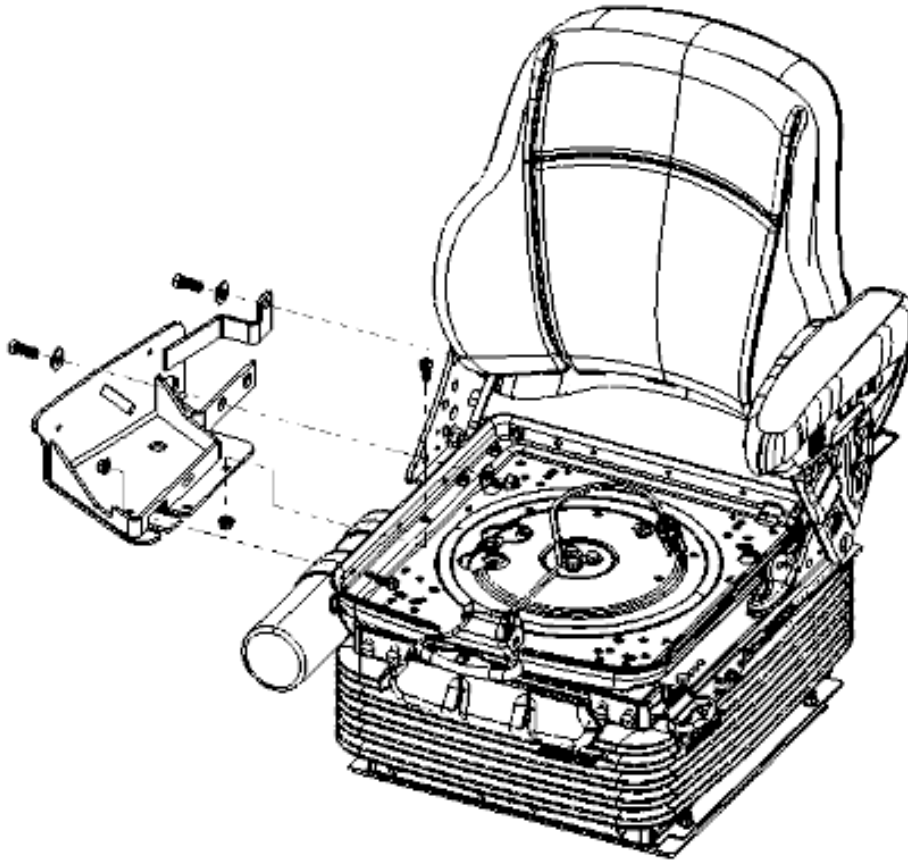
JD 7R/8R-8RT/9R-9RX KM 1300 Air Seat Kit (PN: 6994)



Installation Guide

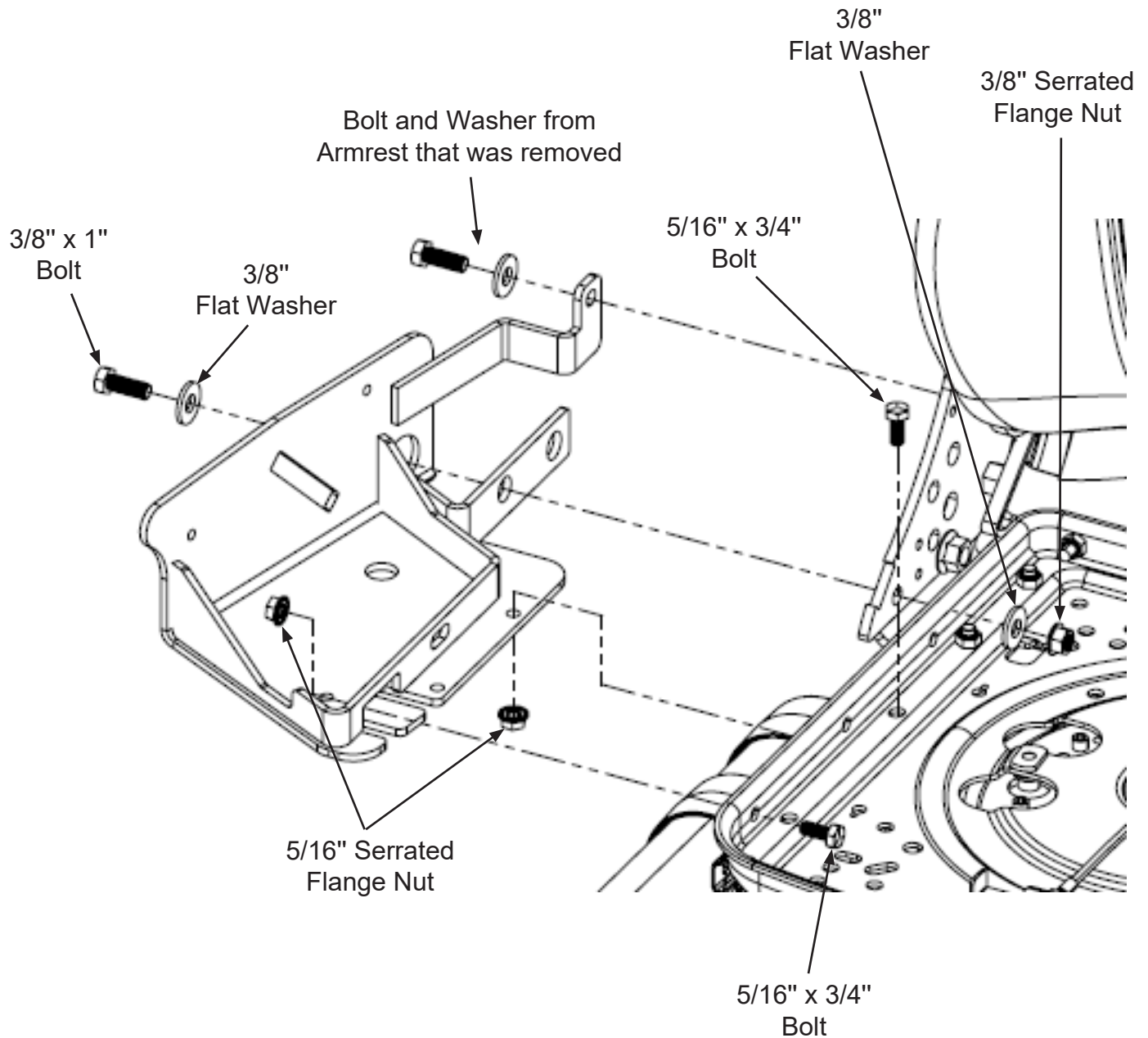
JD 7R/8R-8RT/9R-9RX KM 1300 Air Seat Kit (PN: 6994)

11. Install John Deere part RE576471 using two 5/16" x 3/4" bolts and serrated flange nuts, one 3/8" x 1" bolt with two flat washers and a serrated flange nut, and one bolt and washer from the right hand armrest that was removed. The bolt and washer from the armrest that are being reused will thread into the lower hole where the armrest was mounted. See page 4 for a more detailed view of the installation.
12. Reinstall the seat cushion.



Installation Guide

JD 7R/8R-8RT/9R-9RX KM 1300 Air Seat Kit (PN: 6994)



Installation Guide

JD 7R/8R-8RT/9R-9RX KM 1300 Air Seat Kit (PN: 6994)

13. Install the 6077 PED plate into the tractor. Fasten in place using the original mounting hardware from the original seat.
14. Place the seat into the tractor. Fasten to the 6077 PED plate using four 5/16" x 1" bolts and serrated flange nuts.
15. Mount the Command Arm to the seat assembly using the original hardware.
16. Connect the seat wiring to the cab wiring using the harness provided in the kit.

