

## Installation Guide 6975

### Installation Instructions for KM 1057 Uni Pro Seat & Suspension in International Harvester 86-88 Series Tractors

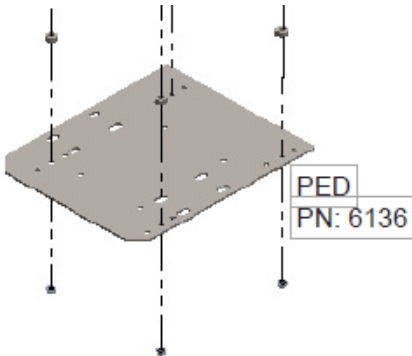
731 Seat Top  
PN: 8374



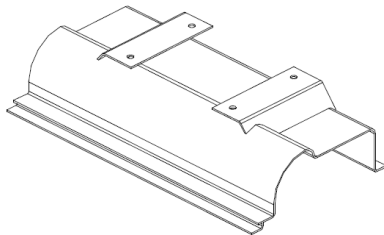
MSG95  
Suspension  
PN: 8078



Optional  
Swivel Kit  
Available  
PN: 5007



Original  
Support  
Bracket



1. Remove the original seat and suspension from the tractor.
2. If original was hydraulic, cap the lines with nuts and plugs provided below the cab. Cut and plug breather line by turning a 5/16" bolt into the tube. (Disregard this step if original was mechanical suspension).
3. Fasten the PN: 6136 pedestal to the original tractor support bracket with original bolts and nuts removed in Step 1. Use hole pattern on pedestal so it is offset to the left.
4. Bolt the suspension assembly to the PN: 6136 pedestal with four 5/16" x 1" bolts using 7/16" nuts as spacers between pedestal and suspension bottom. Fasten with 5/16" flange nuts.
5. Bolt the seat and slide rail assembly to the suspension assembly. (Slide seat forward to access rear two holes and all the way back to access front two holes in slides.)
6. Locate a power source and connect the suspension to power and ground.