

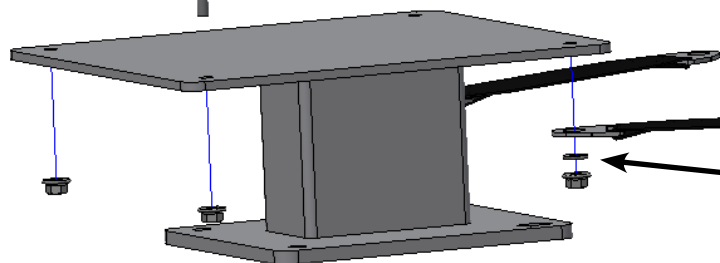
Installation instructions KM440 seat into a JD 310 Backhoe

5/16" FLAT WASHERS



5/16"-18 FLANGE NUTS

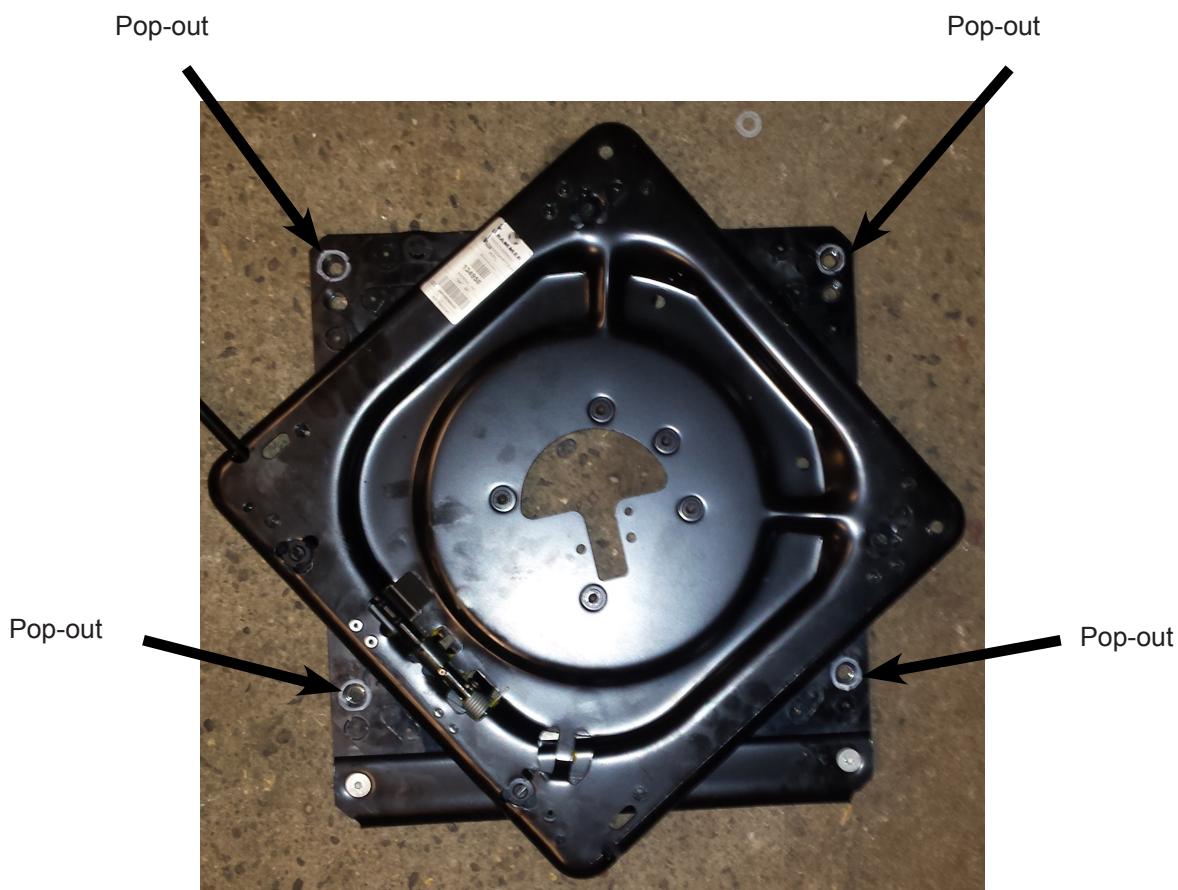
1. Remove the old seat, suspension and PED. Keep the nuts used to fasten the seat to the cab, these will be used to fasten the new seat and suspension.
2. Remove the slide rails from the bottom of the new seat and discard. Keep the oversized washers to be used later.
3. Place the suspension onto the PED, the suspension should be offset forward.
4. Attach one end of the tether to the back two studs. Use two 5/16" washers and 5/16"-18 flange nuts to fasten the suspension down. The washers should be placed between the tether brackets and the flange nuts. **HAND TIGHTEN ONLY.**



5/16" FLAT WASHER

Instructions for KM440 seat into a JD 310 Backhoe

4. Turn the swivel roughly 45 degrees to allow access to the underside of the bottom half of the swivel. Pop out the precut pop-outs marked on the image below using a utility knife or similar.





INSTRUCTION GUIDE 6824

KM 440 Seat Installation (PN: 6824)

Instructions for KM440 seat into a JD 310 Backhoe



5/16\"-18x1\" SOCKET HEAD CAP SCREWS



OVERSIZED WASHER REMOVED IN STEP 2



5/16\"-18 FLANGE NUTS

BACK OF SEAT

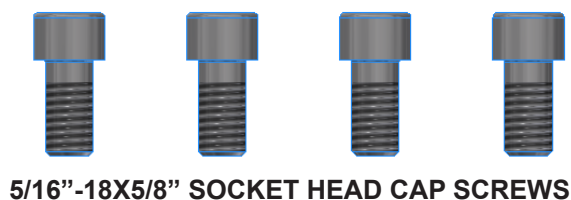
5. Pop out the precut pop-outs on the top half of the swivel shown in the image below. Use a utility knife or similar.
6. Use the holes now accessible from the pop-outs to attach the swivel to the seat bottom using 5/16\"-18x1\" socket head cap screws, oversized washers (from step 2) and flange nuts.
7. Tighten bolts up.



INSTALLATION SUPPORT

Phone 1-800-328-1752 / Web Site www.tractorseats.com

Instructions for KM440 seat into a JD 310 Backhoe



5/16"-18X5/8" SOCKET HEAD CAP SCREWS



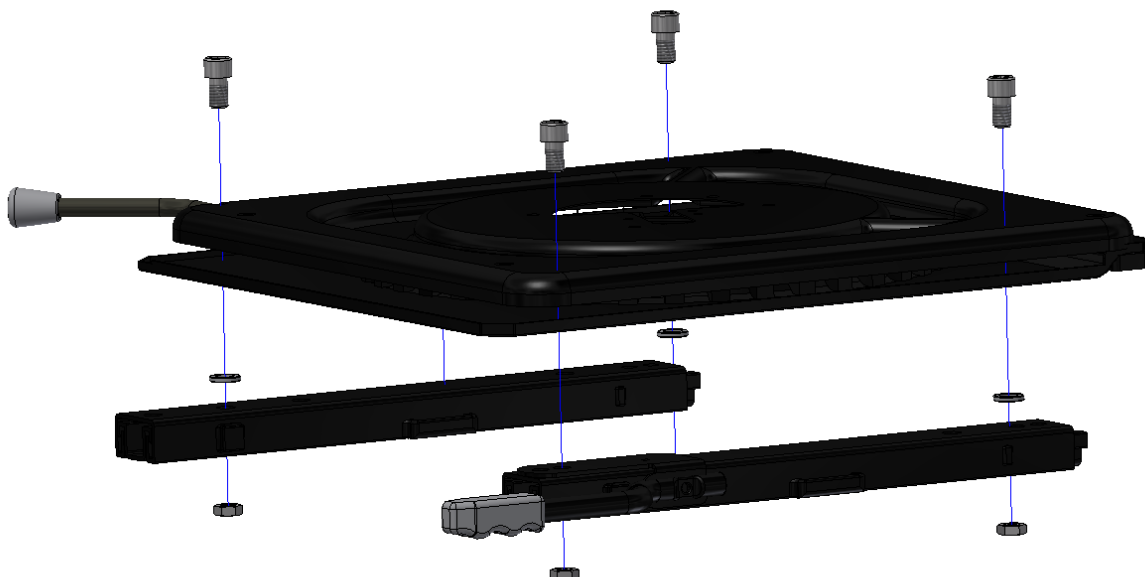
5/16" FLAT WASHERS



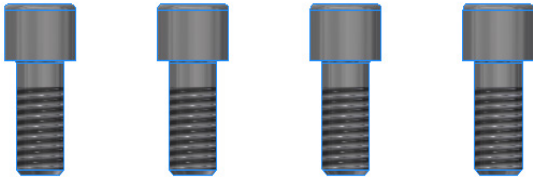
5/16"-18 JAM NUTS

8. Use the holes now accessible from the pop-outs to attached the swivel to the new slide rails sent along with the kit using 5/16"-18x5/8" socket head cap screws, 5/16" flat washers and 5/16-18 jam nuts. The adjustment handle for the slide rails should be opposite of the swivel handle.
9. Tighten bolts up.

***NOTE:** The bolt nearest the slide rail lever does not require a washer. There are only 3 washer required.



Instructions for KM440 seat into a JD 310 Backhoe



5/16"-18X1" SOCKET HEAD CAP SCREWS



5/16" FLAT WASHERS



5/16"-18 FLANGE NUTS



10. Fasten the seat/swivel/slide rail assembly on to the suspension using 5/16"-18 X 1" socket head cap screws, two 5/16" washers and 5/16"-18 flange nuts. Use the front most holes on each of the suspension flanges and second from the front and rear holes on the bottom of the slide rails. The other end of the tethers should be placed between the slide rails and the top of the suspension flanges. The front two bolts should have a 5/16" washer placed in between the slide rails and the suspension flange.
11. Tighten the bolts fastening the bottom slide rails to the suspension and the nuts fastening the suspension to the PED.
12. Insert the whole assembly into the cab of the backhoe. Fasten the PED down using the original nuts.

NOTE: You may install the PED and suspension portion and then fasten the seat/swivel/slide rail assembly if room is not available to insert the whole assembly into the cab at once.