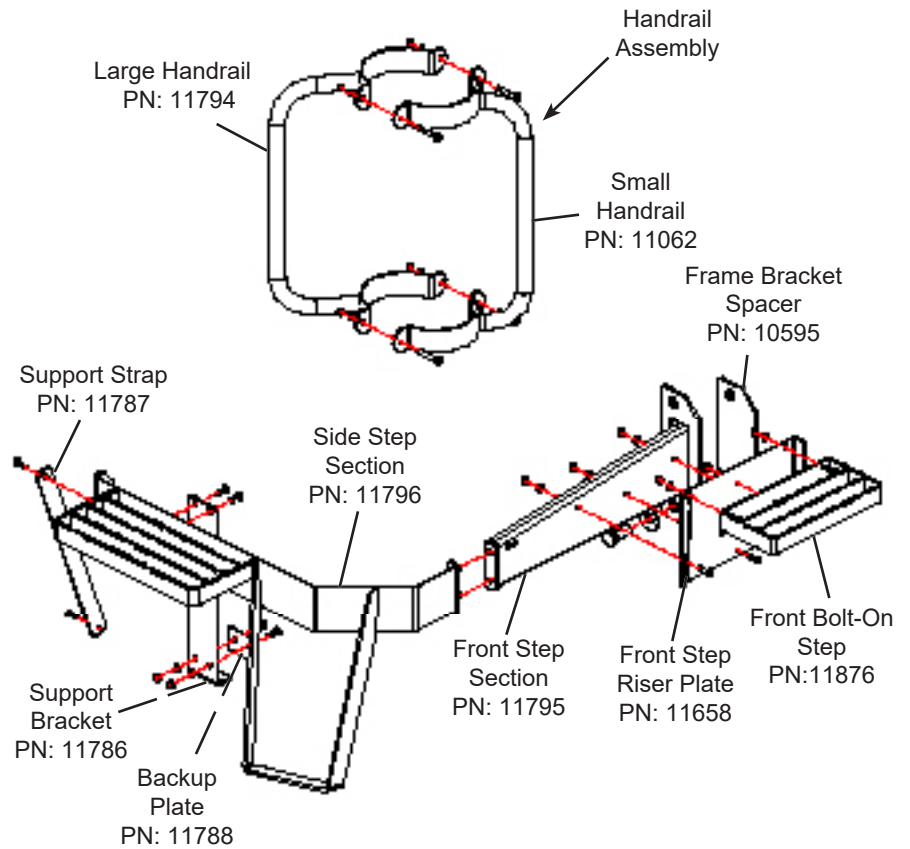


# Installation Guide

## Window Step for CIH MX 180-285 & New (PN: 3339)

**NOTE:** Do not tighten any bolts until all parts have been assembled to the tractor.

1. Bolt the front step section to the tractor using the existing grounding bolt in the top hole and a 20mm x 45mm bolt and 3/4" flat washer in the bottom hole. For New Holland applications, use the frame bracket spacer between the frame and front step section.
2. Fasten the side step section to the front step section using two 5/16" x 1" bolts, lock washers and nuts.
3. Insert two 5/16" x 1" carriage bolts into the back side of the support bracket and two into the backup plate.
4. Place the upper part of the support bracket behind the side step section and place two 5/16" lock washers and nuts on the carriage bolts. Do not tighten at this time.
5. Place the backup plate behind the lip on the bottom of the fuel tank with the carriage bolts going through the holes on the support bracket. Fasten with two 5/16" lock washers and nuts.



6. Tighten the upper two carriage bolts and nuts of the support bracket.
7. Tighten the lower two carriage bolts and nuts of the support bracket.
8. Attach the support strap to the side step section using a 5/16" x 1" carriage bolt, lock washer and nut.
9. Attach the bottom of the support strap to the square tube located near the bottom of the fuel tank with a 3/16" x 1" self-tapping screw.
10. Locate the handrail to the desired height on the muffler shield, being sure that the large handrail is out towards the side of the tractor allowing the tractor light to shine through.
11. Fasten the handrails together using four 5/16" x 2" bolts, lock washers and nuts.
12. Attach the front step riser plate to the front step section using three 5/16" x 1" bolts, lock washers and nuts. Use of the front step riser plate is required for tractors with dual wheels. If installing on a tractor without dual wheels, the use of the front step riser plate is optional.
13. Fasten the front bolt-on step to the front step riser plate using three 5/16" x 1" bolts, lock washers and nuts. If installing on a tractor without dual wheels, the front bolt-on step can be fastened directly to the front step section.
14. After step installation, check turning radius of front tires for interference with step.