



Fig. 1

Remove front nose from hood.



Fig. 2

Remove oem light assembly by removing the 6 nuts.



Fig. 3

After cleaning are where oem light was, mark cut marks as shown in figure 4.



Fig 4



Fig 5.

Mark just under this hole to make cuts.  
(see yellow marks in picture) See figure  
6&7 before making cuts.

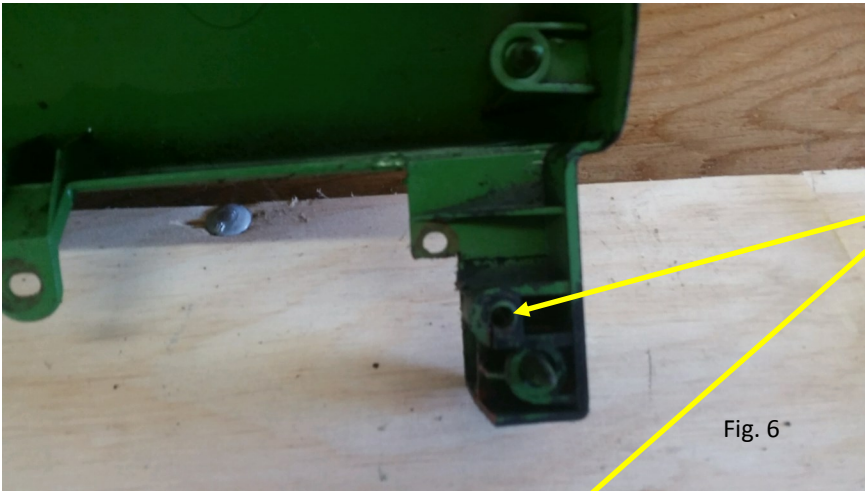


Fig. 6

Cut out plastic housing using your marks. Do not cut into this bolt thread.

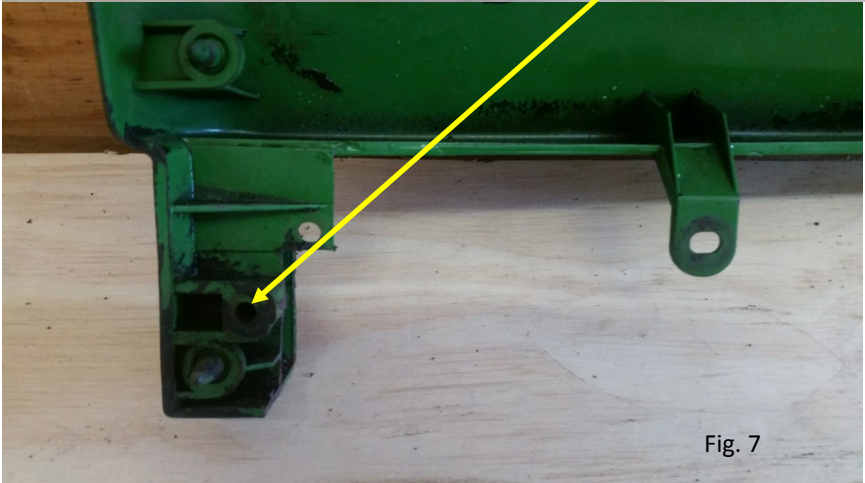


Fig. 7

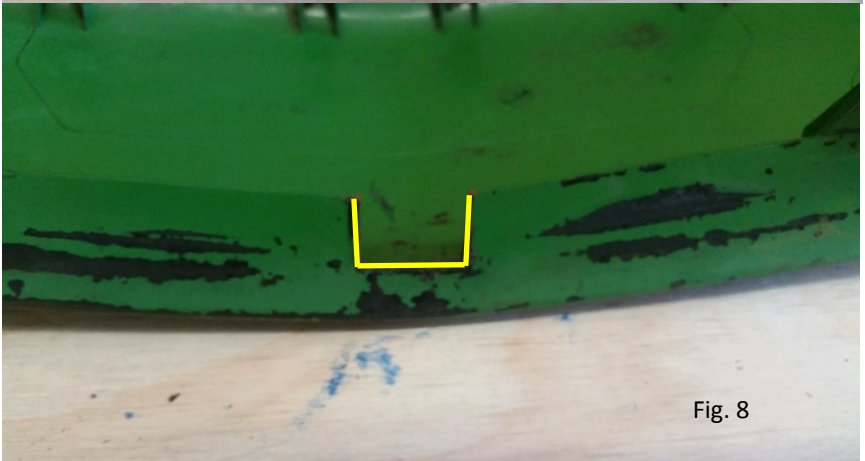


Fig. 8

Mark nose for cutting out for center tab. Cuts only have to be as wide as the tab.

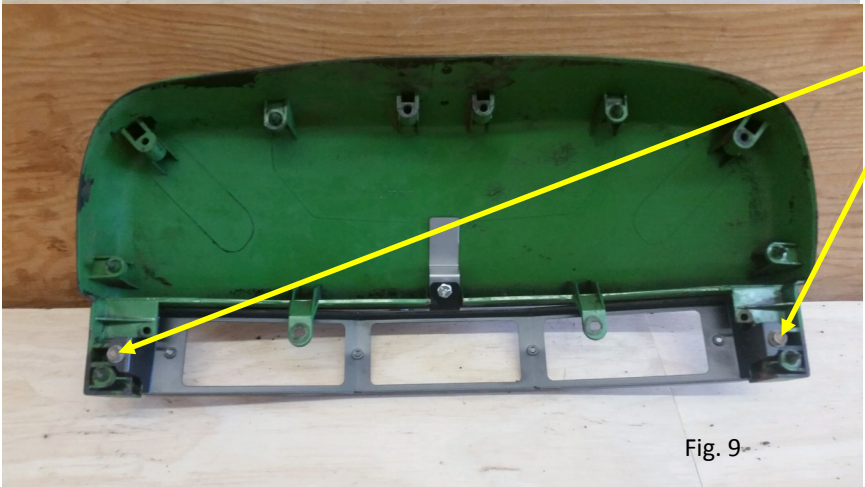


Fig. 9

Install Tigerlights conversion housing using 2 bolts.

Use supplied tab, attach to conversion housing with 1/4" bolt

Mark for where Epoxy has to be applied underneath tab. Remove tab and apply epoxy/reinstall tab. You have 5 mins to reinstall tab before epoxy dries. Let the tab/epoxy set for 20 mins to insure proper setting.

Fig. 10- Reinstall nose to hood, install light housing behind hood mounts. Tighten 3 bolts. Install the supplied lights and wiring harness. Red wire to +/positive, Black to -/negative on the backside of supplied lights.

Fig. 11– Install front bezel using 4 screws to hold lights in place. Tighten screws equally to snug fit on bezel.