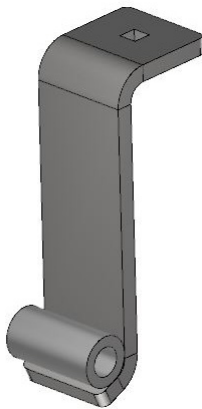
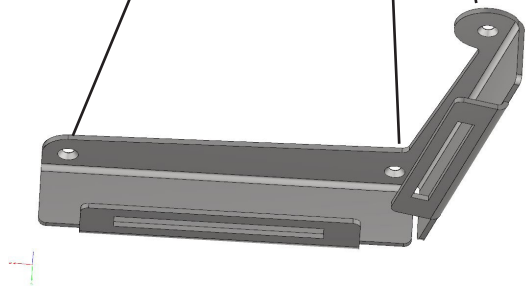


1. Remove the three bolts located by the arrows in Picture 1.
2. Install the monitor bracket with three screws and spacers provided in the bolt bag. Place the spacers between the monitor bracket and the cab headliner. Start all three screws and then tighten.
3. Install monitor to bracket with either optional mount 2770, 2771 or a ball mount.



PN: 2770



PN: 2771

