



# **TRI-STAND CHAIN VISE**

## **OWNER'S MANUAL**



**Item# 23235**



### **WARNING:**

Read carefully and understand all **ASSEMBLY AND OPERATION INSTRUCTIONS** before operating. Failure to follow the safety rules and other basic safety precautions may result in serious personal injury.

Thank you very much for choosing a Roughneck™ Product! For future reference, please complete the owner's record below:

Model: \_\_\_\_\_ Purchase Date: \_\_\_\_\_

Save the receipt, warranty and these instructions. It is important that you read the entire manual to become familiar with this product before you begin using it.

This machine is designed for certain applications only. The distributor cannot be responsible for issues arising from modification. We strongly recommend this machine is not modified and/or used for any application other than that for which it was designed. If you have any questions relative to a particular application, DO NOT use the machine until you have first contacted distributor to determine if it can or should be performed on the product.

For technical questions, please call **1-800-222-5381**.


## **APPLICATION**


This tri-stand chain vise is used to hold and work pipe with a chain vise. It is equipped with tool hangers and a tray for equipment storage during use, pipe benders for bending and adjusting pipe, and a jackscrew to help stabilize the vise when bending. The vise easily folds for storage and transportation and allows adjustment of stand stiffness.

## **TECHNICAL SPECIFICATIONS**

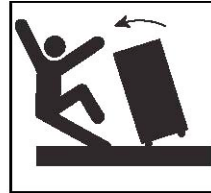
<b>Description</b>	<b>Specifications</b>
Rated Pipe Capacity	(1) 2–6in. dia. pipe
Chain Length:	27.55in. (700mm)
Working Height:	36 7/16in.

## **GENERAL SAFETY REGULATIONS**

 **WARNING: Read and understand all instructions.** Failure to follow all instructions listed below may result in serious bodily injury or death, and/or property damage.

 **WARNING: The warnings, cautions, and instructions discussed in this instruction manual cannot cover all possible conditions or situations that could occur.** It must be understood by the operator that common sense and caution are factors that cannot be built into this product, but must be supplied by the operator.

- **Always wear ANSI-approved safety glasses and heavy-duty work gloves during assembly and use.** Do not wear loose clothing or jewelry, which can get caught in moving parts.
- **Keep fingers and hands away from pinch points** to prevent injury when assembling and removing.
- **Support pipe with pipe stands.** Failure to properly support the pipe can cause vise tipping, falling pipe, chain breakage and serious injury.

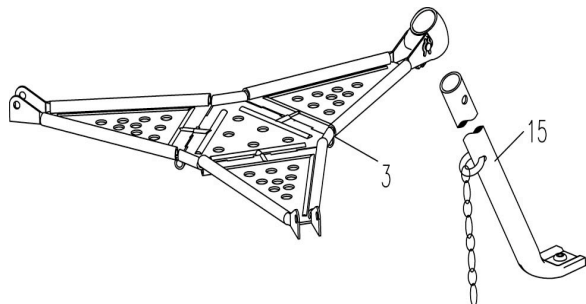


- **Make sure the operator is familiar with the chain vise controls** before being operating the equipment.
- **Keep the work area clean and dry.** Damp or wet work areas can result in injury.
- **Keep children away from work area.** Do not allow children to handle this product.
- **Store idle equipment.** When not in use, tools and equipment should be stored in a dry location to inhibit rust. Always lock up tools and equipment, and keep out of reach of children.
- **Use the right tool for the job.** Do not attempt to force small equipment to do the work of larger industrial equipment. There are certain applications for which this equipment was designed. It will do the job better and more safely at the capacity for which it was intended. Do not modify this equipment, and do not use this equipment for a purpose for which it was not intended.
- **Do not overreach.** Keep proper footing and balance at all times to prevent tripping, falling, back injury, etc.
- **DO NOT use the equipment when tired or under the influence of drugs, alcohol, or medication.** A moment of inattention while operating this equipment may result in serious personal injury.

## SET-UP INSTRUCTIONS

1 Find a clean, level, stable location to set up the vise.

2 Insert the rear leg assembly (part no. 15) into tray support (part no. 4) as shown in Fig 1. Then tighten the set screw (part no. 13) lightly. **Keep fingers and hands away from pinch points to prevent injury when assembling and removing.**



3 Slide front leg assembly (part no.14) into tray support, aligning holes in tool tray (part no.3) with holes in front leg assembly. Slide tray pin (part no. 11) through the holes and fix with clip (part no. 12). As shown in Fig 2.

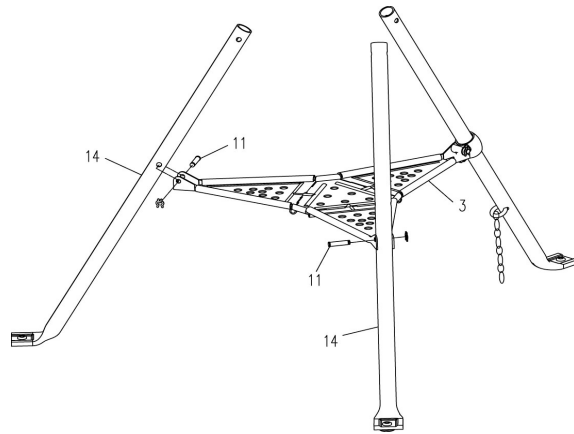
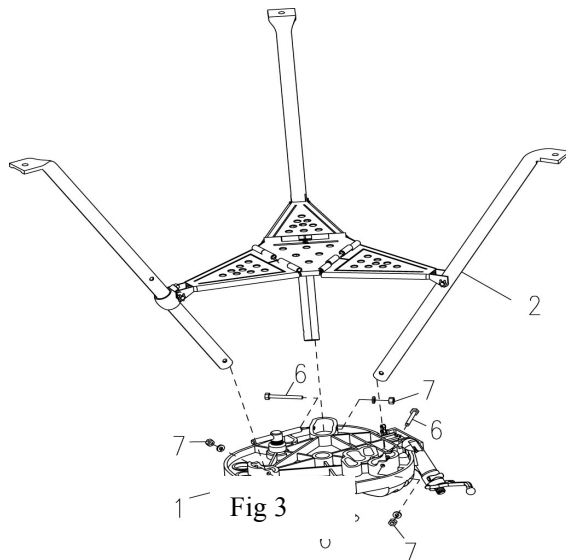


Fig 2



4 Place base assembly (part no.1) upside down on ground as shown in Fig 3 and place legs into the holes with front leg assembly (part no.14) toward jaws. Insert leg bolts (part no.6), secure with nuts and lock washers (part no. 7)

5 Turn the stand right side up and straighten tool tray. Adjust and tighten the set screw (part no. 13) at desired height. As shown in Fig 4.

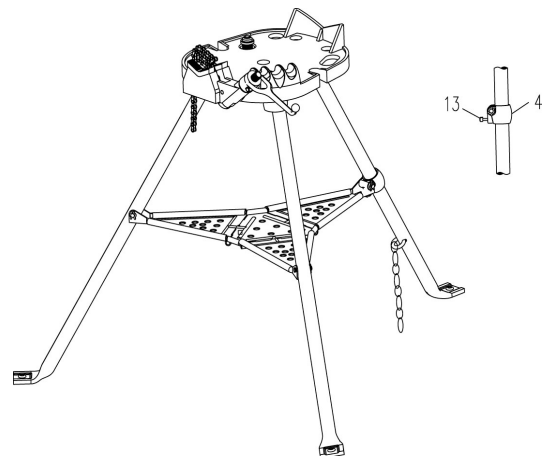


Fig 4

6 After finishing the assembly, place pipe into vise. Tighten the vise to hold the pipe in place. Do not drop the pipe on the vise or use handle extensions when tightening the vise, as this can damage the vise. Make sure the pipe and stand are stable for the work to be done. For best stability during use, keep the pipe end as close to the vise as possible. Use appropriate pipe supports if the pipe extends past the base of the stand. Failure to properly support the pipe can cause chain breakage, vise tipping, falling pipe and serious injury.

When using the vise, do not over reach and maintain proper footing and balance at all times. This allows better control in unexpected situations.

- 7 Pipe Benders – to reduce the chance of kinking, bend approximately 10 degrees at a time, moving the pipe slightly in or out of the bender after each bend, until the desired bend is formed.

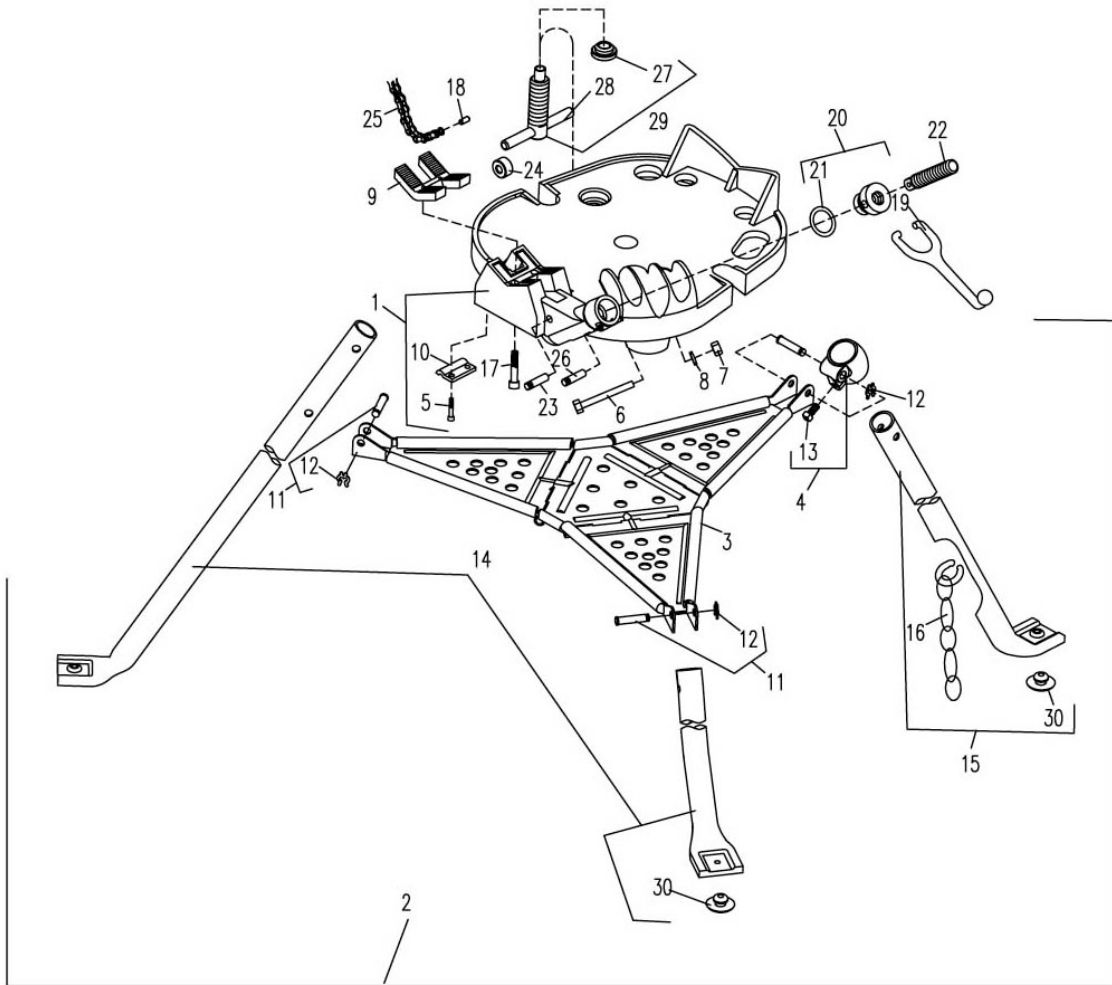
## **INSPECTION/MAINTENANCE**

The vise should be inspected before each use for wear or damage that could affect the safe use of the vise. Clean the vise to aid inspection and help prevent handles, etc. from slipping from your grip. Make sure the vise is complete and properly assembled. Clean the teeth of the jaw with a wire brush to remove dirt. Replace jaw if teeth are worn to prevent pipe slippage. Inspect chain for any separation of links or other damage. Link separation indicates the chain has been overloaded and should be replaced. If any problems are found, do not use the vise until the problems are corrected. Lubricate all moving parts/joints as needed with a light lubricant oil and wipe any excess oil from the stand.

## **NOTICE**

Use of equipment for both carbon and stainless steel pipe can lead to contamination of the stainless steel material. This contamination could cause corrosion and premature pipe failure. To prevent ferrous contamination of stainless steel pipe, use dedicated equipment. Alternately, a stainless wire brush may be used to thoroughly clean the equipment when switching between materials.

# BREAKDOWN AND PARTS LIST FOR TRI-STAND CHAIN VISE



S/N	ITEM	S/N	ITEM
01	Base assembly	16	Leg chain
02	Leg & tray assembly	17	Screw
03	Tool tray	18	Chain pin
04	Tray support /w screw	19	Handle
05	Screw	20	Swivel nut /w friction ring
06	Leg bolt	21	Friction ring
07	Nut	22	Chain screw
08	Washer	23	Roll pin
09	Jaw	24	Roll
10	Wear plate	25	Chain assembly
11	Tray pin	26	Pin
12	Clip	27	Cap
13	Set screw	28	Jack screw
14	Front leg assembly	29	Jack screw assembly
15	Rear leg assembly	30	Grommet

## **WARRANTY**

One-year limited warranty. For warranty questions, call 1-800-222-5381.



**Distributed by**  
**Northern Tool + Equipment Co., Inc.**  
**Burnsville, MN 55306**  
**NorthernTool.com**  
**Made in China**