

# KLUTCH

## 3/8in. x 50ft. Cold Flex Air Hose Reel

Owner's Manual



**⚠ WARNING:** Read carefully and understand all ASSEMBLY AND OPERATION INSTRUCTIONS before operating. Failure to follow the safety rules and other basic safety precautions may result in serious personal injury.

Item #62249

**READ & SAVE THESE INSTRUCTIONS**

Thank you very much for choosing a Klutch® product!

For future reference, please complete the owner's record below:

Serial Number/Lot Date Code: \_\_\_\_\_

Purchase Date: \_\_\_\_\_

Save the receipt, warranty, and this manual. It is important that you read the entire manual to become familiar with this product before you begin using it.

This air hose reel is designed for certain applications only. Northern Tool & Equipment is not responsible for issues arising from modification or improper use of this product such as an application for which it was not designed. We strongly recommend that this product not be modified and/or used for any application other than that for which it was designed.

For technical questions, please call **1-800-222-5381**.

**Table of Contents**

**Intended Use.....4**

**Technical Specifications .....4**

**Important Safety Information .....4**

**Specific Operation Warnings .....6**

**Assembly Instructions.....6**

**Before Each Use.....7**

**Operating Instructions.....8**

**Maintenance .....8**

**Troubleshooting.....9**

**Parts Diagram .....11**

**Parts List .....11**

**Replacement Parts .....12**

**Limited Warranty .....13**

## Intended Use

The Klutch 3/8in. x 50ft. Cold Flex Air Hose Reel incorporates metal forms to ensure strength and function equally well in both mobile and permanent mount situations. The hose reel is suitable for a variety of heavy-duty applications in the mining, construction, service, and marine industries. The industrial-grade reel includes a hose with a maximum 300 PSI working pressure as well as automatic rewind. The hose reel is easy to mount to a wall, floor, or ceiling. The reel features an adjustable guide arm that allows for a variety of mounting orientations.

## Technical Specifications

Property	Specification
Max. PSI	300
Hose Length (ft.)	50
Hose Outlet Size (in. NPT)	3/8
Hose Material	Flexible Hybrid Polymer
Max. Hose Temp Range (°F)	176
Min. Hose Temp Range (°F)	-40
Reel Inlet Size (in. NPT)	3/8

## Important Safety Information

### **⚠️WARNING**

- Read and understand all instructions. Failure to follow all instructions may result in serious injury or property damage.
- The warnings, cautions, and instructions in this manual cannot cover all possible conditions or situations that could occur. Exercise common sense and caution when using this tool. Always be aware of the environment and ensure that the tool is used in a safe and responsible manner.
- Do not allow persons to operate or assemble the product until they have read this manual and have developed a thorough understanding of how it works.
- Do not modify this product in any way. Unauthorized modification may impair the function and/or safety and could affect the life of the product. There are specific applications for which the product was designed.
- Use the right tool for the job. DO NOT attempt to force small equipment to do the work of larger industrial equipment. There are certain applications for which this equipment was designed. It will be a safer experience and do the job better at the capacity for which it was intended. DO NOT use this equipment for a purpose for which it was not intended.
- Industrial or commercial applications must follow OSHA requirements.

### **⚠️WARNING**

#### **WORK AREA SAFETY**

- Inspect the work area before each use. Keep work area clean, dry, free of clutter, and well-lit. Cluttered, wet, or dark work areas can result in injury. Using the product in confined work areas may put you dangerously close to cutting tools and rotating parts.

- Do not use the product where there is a risk of causing a fire or an explosion; e.g., in the presence of flammable liquids, gases, or dust. The product can create sparks, which may ignite the flammable liquids, gases, or dust.
- Do not allow the product to come into contact with an electrical source. The tool is not insulated and contact will cause electrical shock.
- Keep children and bystanders away from the work area while operating the tool. Do not allow children to handle the product.
- Be aware of all power lines, electrical circuits, water pipes, and other mechanical hazards in your work area. Some of these hazards may be hidden from your view and may cause personal injury and/or property damage if contacted.

## **⚠️WARNING**

### **PERSONAL SAFETY**

- Stay alert, watch what you are doing, and use common sense when operating the tool. Do not use the tool while you are tired or under the influence of drugs, alcohol, or medication. A moment of inattention while operating the tool may result in serious personal injury.
- Dress properly. Do not wear loose clothing, dangling objects, or jewelry. Keep your hair, clothing and gloves away from moving parts. Loose clothes, jewelry, or long hair can be caught in moving parts. Air vents on the tool often cover moving parts and should be avoided.
- Wear the proper personal protective equipment when necessary. Use ANSI Z87.1 compliant safety goggles (not safety glasses) with side shields, or when needed, a face shield. Use a dust mask in dusty work conditions. Also use non-skid safety shoes, hardhat, gloves, dust collection systems, and hearing protection when appropriate. This applies to all persons in the work area.
- Do not overreach. Keep proper footing and balance at all times.

## **⚠️CAUTION**

### **HOSE REEL USE AND CARE**

- Do not force the hose reel. Products are safer and do a better job when used in the manner for which they are designed. Plan your work, and use the correct product for the job.
- Check for damaged parts before each use. Carefully check that the product will operate properly and perform its intended function. Replace damaged or worn parts immediately. Never operate the product with a damaged part.
- Store the hose reel when it is not in use. Store it in a dry, secure place out of the reach of children. Inspect the tool for good working condition prior to storage and before re-use.
- Use only accessories that are recommended by the manufacturer for use with your product. Accessories that may be suitable for one product may create a risk of injury when used with

another tool. Never use an accessory that has a lower operating speed or operating pressure than the tool itself.

- Keep guards in place and in working order. Never operate the product without the guards in place.

## Specific Operation Warnings

### **⚠WARNING**

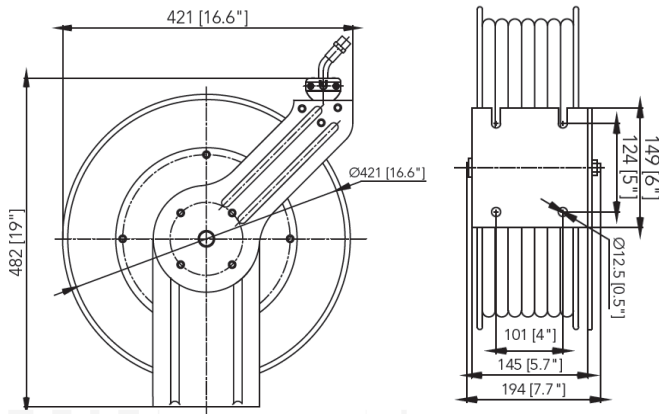
- Wear ANSI Z87.1 compliant safety goggles or safety glasses with side shields when assembling and using the hose reel.
- Do not exceed the max working pressure of 300 PSI.
- Keep children away from the work area. If not in use, store out of the reach of children.
- Ensure that the reel is properly installed before connecting input and output hoses.
- Before connecting a pressure source, ensure that the supply pressure does not exceed maximum working pressure rating of reel.
- Never attach any tool or accessory to the hose unless it is capable of safely operating at a pressure greater than the supply pressure.
- If a leak occurs in the hose or reel, remove system pressure immediately.
- If reel ceases to unwind or rewind, remove system pressure immediately.
- Do not kink the hose. Do not step on the hose or drive or drag objects over the hose. Do not place any objects on the hose or hose reel.
- Pull the hose from the reel by grasping the hose itself, not the valve.
- Bleed fluid/gas pressure from reel before servicing it.
- Use soap and water when checking for air leaks. Exposure of skin directly to pressurized air or fluids could result in severe bodily injury. Remember, even low pressure is very dangerous and can cause personal injury or death.

## Assembly Instructions

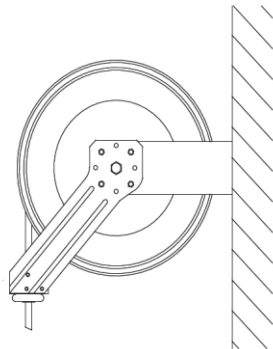
### **⚠WARNING**

To avoid a dangerous sudden release of pressure that can cause severe injury, ensure that the pressure source for the reel is turned off and the supply hose is not pressurized.

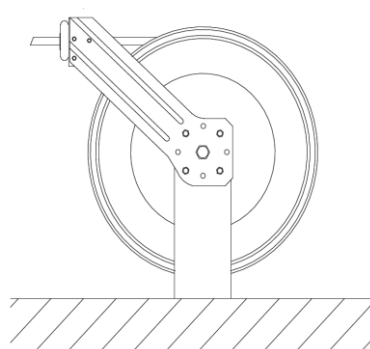
1. Prior to mounting the hose reel, ensure that the supply hose pressure does not exceed the maximum working pressure of the hose reel. Also check that the pressure source is turned off and the supply hose for the reel is not pressurized.
2. Unpack the reel and inspect for damages. Check that the reel has a smooth rotation.
3. Fasten the mounting base (#4 in parts list) in the desired location. The reel dimensions and the pattern of the mounting holes in the base are shown below. Tighten all hardware securely.



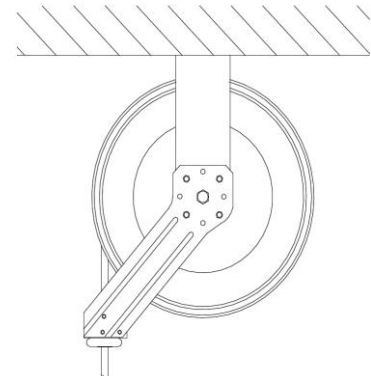
- The arm (5) that guides the hose on and off the reel can be repositioned for better function as shown in the picture below.



Wall



Floor



Ceiling

### Repositioning the Arm

- Pull out the hose until the reel latches.
- Remove the four sets of nuts and washers holding the arm to the base.
- Turn the arm to a desired position, aligning the arm mounting holes with the holes in the flange of the base, and retighten the nuts and washers.

### Before Each Use

#### ⚠WARNING

- Ensure that the reel is properly installed before connecting input and output hoses.
- Before connecting a pressure source, ensure that the supply pressure does not exceed maximum working pressure rating of reel.
- Inspect the hose reel fittings, alignment, hoses, and components periodically before use.

## Operating Instructions

### ⚠WARNING

- Wear ANSI Z87.1 compliant safety goggles or safety glasses with side shields when assembling and using the hose reel.
- Do not exceed the max working pressure of 300 PSI.
- Never attach any tool or accessory to the hose unless it is capable of safely operating at a pressure greater than the supply pressure.
- If a leak occurs in the hose or reel, remove system pressure immediately.
- If reel ceases to unwind or rewind, remove system pressure immediately.
- Do not kink the hose. Do not step on the hose or drive or drag objects over the hose. Do not place any objects on the hose or hose reel.
- Pull the hose from the reel by grasping the hose itself, not the valve.
- Use soap and water when checking for air leaks. Exposure of skin directly to pressurized air or fluids could result in severe bodily injury. Remember, even low pressure is very dangerous and can cause personal injury or death.
- Avoid accidentally releasing the reel's latching mechanism. The hose reel is under tension and accidental release can cause a wildly spinning reel and personal injury.
- If necessary, adjust the spring tension on the reel by adding or removing wraps of hose from the spool, one wrap at a time, until desired tension is obtained.
- To avoid damage to the hose reel, always hold on to the cable while it is rewinding.

1. Check the reel for correct operation by slowly pulling out the hose. A clicking noise will be heard every half revolution of the drum.
2. To latch the reel, pull out the hose then allow it to retract after hearing the first, second, or third click.
3. To unlatch the reel, slowly pull out the hose until the clicking noise stops then, holding on to the hose, let it retract in a controlled way until the stop/block rests against the hose guide/rollers.
4. Keep the hose and air-tools or nozzles dry, clean, and free from oil and grease.
5. Periodically clean the hose with a cloth dipped in warm water to remove dirt or deposits and ensure correct winding on the reel. Do not use detergents or solvents which could damage with cable-winding materials.
6. Periodically check the hose condition for wear or damage, and check the swivel fitting for leakage. See the maintenance section for tips to replace any worn, damaged, or leaking parts.

## Maintenance

Maintain the hose reel by adopting a program of conscientious repair and maintenance in accordance with the following recommended procedures. It is recommended that the general condition of any tool be examined before it is used. Keep your tool in good repair. Keep handles dry, clean, and free from oil and grease. The following chart is based on a normal operation schedule.

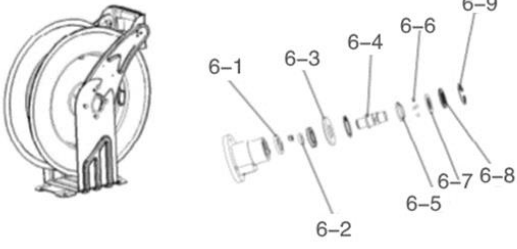


Maintenance Interval	Maintenance Point
Every three months	<p>Clean the hose with a cloth dipped in warm water to remove dirt or deposits and ensure the reel is rewinding correctly.</p> <p>Do not use detergents or solvents which could be damaging to the cable-winding materials.</p>

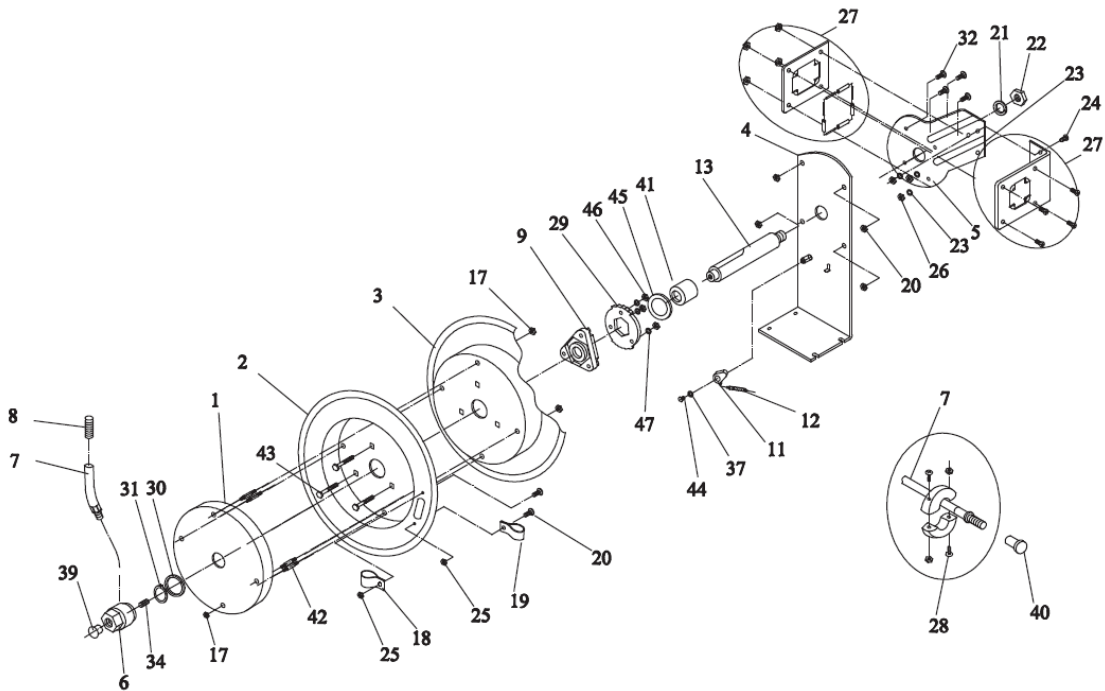
## Troubleshooting

Use the table below to troubleshoot problems before contacting service personnel or your local dealer. If the problem continues after troubleshooting, call your local dealer for assistance.

Failure	Possible Cause	Corrective Action
The spring does not work well.	The spring tension needs to be adjusted.	<p><b>Adjust the spring tension:</b></p> <ol style="list-style-type: none"> <li>1. Pull out approximately 6 feet of hose and allow the drum to latch.</li> <li>2. Remove the hose stopper from the hose, and feed the hose back through the guide.</li> <li>3. Wrap the pulled hose one time around the drum to increase tension or un-wrap the hose one time from the drum to decrease tension.</li> <li>4. Re-insert the hose through the guide, and install the stopper onto hose end.</li> <li>5. Unlatch the drum and check the tension. Pull the hose from the reel, and adjust the stopper position if necessary.</li> </ol>
Air leaks out.	The hose is broken.	<p><b>Replace the hose:</b></p> <ol style="list-style-type: none"> <li>1. Disconnect air source.</li> <li>2. Pull out all of the old hose and latch the reel in this position. For added safety, secure the drum in the latched position.</li> <li>3. Carefully disconnect the hose from the male fitting in the axle's center, and remove the old hose.</li> <li>4. Insert the new hose through the roller bracket, and feed it through the opening in the center of the drum hub.</li> <li>5. Apply thread tape to the fitting in the axle's center, then screw the hose onto the fitting and tighten.</li> <li>6. Install the hose stopper on the other end of the hose.</li> <li>7. Carefully release the drum latch, and slowly allow the hose to wind onto the reel.</li> </ol>

Failure	Possible Cause	Corrective Action
<p>The swivel seal does not work.</p>	<p>The swivel seal is broken.</p>	<p><b>Install a new swivel:</b></p> <ol style="list-style-type: none"> <li>1. Turn off the pressure source, release pressure from the system, and remove the supply hose connection from the swivel.</li> <li>2. Remove the swivel assembly (6) from reel axle.</li> <li>3. Remove the circlip from the swivel and take it apart. See the diagram below for reference.</li> <li>4. Replace the seals and reassemble the swivel.</li> <li>5. Use Teflon tape or thread sealant on the swivel threads and reconnect the swivel with the axle.</li> <li>6. Use Teflon tape or thread sealant on the inlet supply hose threads and reconnect it to the swivel.</li> <li>7. Pressurize the system and check for leaks.</li> </ol>  <p><b>Swivel Assembly Parts List:</b></p> <ul style="list-style-type: none"> <li>6-1: Washer (1)</li> <li>6-2: O ring or Seal (1)</li> <li>6-3: Washer (1)</li> <li>6-4: Swivel Shaft (1)</li> <li>6-5: Bearing Cover (1)</li> <li>6-6: Ball Bearing (1)</li> <li>6-7: Bearing Washer (1)</li> <li>6-8: Washer (1)</li> <li>6-9: Lock Washer (1)</li> </ul>

## Parts Diagram



## Parts List

Part Number	Part Description	Quantity
1	Spring Assembly	1
2	Drum-1	1
3	Drum-2	1
4	Base	1
5	Arm	1
6	Swivel Assembly	1
7	Hose Assembly	1
8	Guard Spring	1
9	Hub Bearing Assembly	1
11	Ratchet	2
12	Spring, Dog	1
13	Axle	1
17	Nut-1	8
18	Clamp-1	1
19	Clamp-2	1
20	Bolt-1	2
21	Washer-1 and Bolt-2 Set	2
22	Nut-2	1
23	Washer-2	3
24	Bolt-3	3
25	Nut-3	2
26	Nut-4 and Lock-1 Set	1
27	Roller Bracket Assembly	1
28	Ball Stop Assembly	1
29	Locking Ring	1
30	Washer Spacer-1	1
31	Retaining Ring	1
32	Bolt-4	4

<b>Part Number</b>	<b>Part Description</b>	<b>Quantity</b>
34	Setscrew-1	1
37	Washer Spacer-2	1
39	Cover-1	1
40	Cover-2	1
42	Setscrew-2	4
43	Bolt-5	3
44	Bolt-6	1
45	Washer Spacer-3	1
46	Nut-5 and Lock-2 Set	3
47	Washer Spacer-4	3

## Replacement Parts

- For replacement parts and technical questions, please call Customer Service at **1-800-222-5381**.
- Not all product components are available for replacement. The illustrations provided are a convenient reference to the location and position of parts in the assembly sequence.
- When ordering parts, the following information will be required: item description, item model number, item serial number/item lot date code, and the replacement part reference number.
- The distributor reserves the rights to make design changes and improvements to product lines and manuals without notice.

## Limited Warranty

Northern Tool and Equipment Company, Inc. ("We" or "Us") warrants to the original purchaser only ("You" or "Your") that the Klutch product purchased will be free from material defects in both materials and workmanship, normal wear and tear excepted, for a period of **two years** from date of purchase. The foregoing warranty is valid only if the installation and use of the product is strictly in accordance with product instructions. There are no other warranties, express or implied, including the warranty of merchantability or fitness for a particular purpose. If the product does not comply with this limited warranty, Your sole and exclusive remedy is that We will, at our sole option and within a commercially reasonable time, either replace the product or product component without charge to You or refund the purchase price (less shipping). This limited warranty is not transferable.

### Limitations on the Warranty

This limited warranty does not cover: (a) normal wear and tear; (b) damage through abuse, neglect, misuse, or as a result of any accident or in any other manner; (c) damage from misapplication, overloading, or improper installation; (d) improper maintenance and repair; and (e) product alteration in any manner by anyone other than Us, with the sole exception of alterations made pursuant to product instructions and in a workmanlike manner.

### Obligations of Purchaser

You must retain Your product purchase receipt to verify date of purchase and that You are the original purchaser. To make a warranty claim, contact Us at 1-800-222-5381, identify the product by make and model number, and follow the claim instructions that will be provided. The product and the purchase receipt must be provided to Us in order to process Your warranty claim. Any returned product that is replaced or refunded by Us becomes our property. You will be responsible for return shipping costs or costs related to Your return visit to a retail store.

### Remedy Limits

Product replacement or a refund of the purchase price is Your sole remedy under this limited warranty or any other warranty related to the product. We shall not be liable for: service or labor charges or damage to Your property incurred in removing or replacing the product; any damages, including, without limitation, damages to tangible personal property or personal injury, related to Your improper use, installation, or maintenance of the product or product component; or any indirect, incidental or consequential damages of any kind for any reason.

### Assumption of Risk

You acknowledge and agree that any use of the product for any purpose other than the specified use(s) stated in the product instructions is at Your own risk.

### Governing Law

This limited warranty gives You specific legal rights, and You also may have other rights which vary from state to state. Some states do not allow limitations or exclusions on implied warranties or incidental or consequential damages, so the above limitations may not apply to You. This limited warranty is governed by the laws of the State of Minnesota, without regard to rules pertaining to conflicts of law. The state courts located in Dakota County, Minnesota shall have exclusive jurisdiction for any disputes relating to this warranty.

# **KLUTCH**

Distributed by:

Northern Tool & Equipment Company, Inc.

Burnsville, Minnesota 55306

[www.northerntool.com](http://www.northerntool.com)

Made in China